

# F-Style Large Capacity Ice Storage Bins

## Models

☐ F-700

☐ F-1300

☐ F-1325

☐ F-1650

☐ FC-1350



F-1300 Ice Storage Bin



FC-1350 Ice Storage Bin & Cart System

## Standard Features

Manitowoc F-style large capacity ice storage bins are equipped with a sliding ice gate for increased employee safety, easier ice removal, and reduced spillage.

Choose a bin width from 30", 48" or 60", with theoretical ice storage capacities of 520 lbs., 970 lbs. or up to 1210 lbs.

### Sliding Ice Gate

- Controls ice flow into snout for easy removal with either scoop or shovel
- Returns easily to full down position

### Quality Construction

- Stainless steel exterior
- Heavy-duty welded construction
- Non-CFC foamed-in-place insulation

- Impact-resistant sliding windows for easy bin inspection

### Durable Polyethylene Lift Door

- Ball catch hinge holds bin door open when scooping ice
- Eliminates sharp corners and gaskets
- Provides outstanding durability
- Offers maximum access for fast, easy ice removal

## Warranty

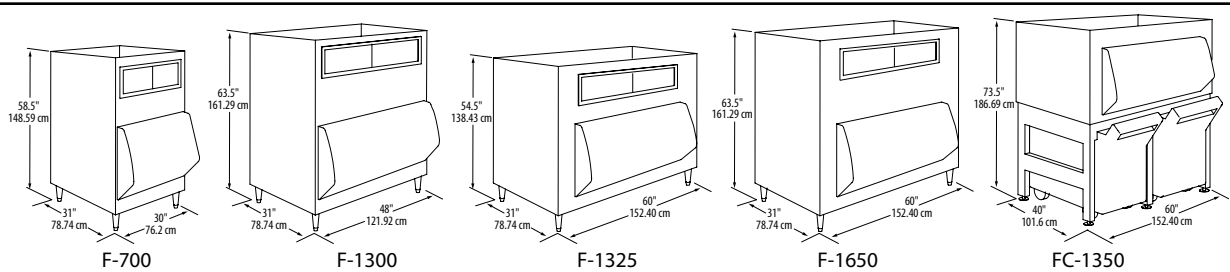
Bin & Accessories: 3-Year Parts & Labor

Carts: 2-Year Parts & Labor





# F-Style Large Capacity Ice Storage Bins

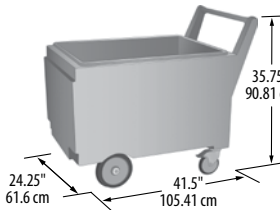


## Standard Equipment

**F-Series Bins Include:** set of (4) 6" bin legs, ice scoop, stainless steel adapter for 30" or 48" Indigo Series Cubers (see chart)

### FC-1350 Bin and Cart System Includes:

bin, base, (2) 240 lb. capacity carts with lids, set of (6) flanged legs, Ice Paddle, stainless steel adapter for 30" or 48" Indigo Series Cubers (see chart)



## Accessories

### Model # Description

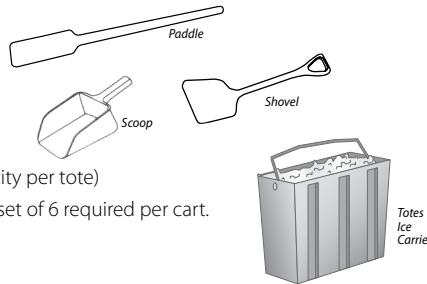
K-00412 Paddle 46.5" (118.11 cm) length

3302593 82 oz. Scoop

K-00414 Shovel 36" (91.44 cm) Length

K-00416 Totes Ice Carrier, Set of 6 (25 lb. capacity per tote)

Totes for use with FC-1350 cart. One set of 6 required per cart.



## Theoretical Storage Capacity

	Model	AHRI* Lbs. / kg	Cu. Ft.
30"	F-700	520	21.5
		236	
48"	F-1300	970	40.2
		440	
60"	F-1325	1000	41.7
		454	
	F-1650	1210	50.3
		549	
	FC-1350	1050	43.9
		476	

Theoretical storage capacity is based on 80% of total volume x 30 lbs/ft<sup>3</sup> average density of ice

## Ice Deflectors — Required

Manitowoc Cuber Model	Ice Deflector Model Number
i-450, i-500, i-606, i-906, i-1106, i-1200	K-00347
i-1406, i-1800	K-00349
i-1470C, i-1870C, i-2176C	K-00382 (for single ice machine) K-00383 (for side-by-side ice machines)
S-3070C, S-3300	K-00391

## Bin Adapters

Model	Ice Makers on bin	Bin Width	i-500	i-606	i-906 i1106	i686C i976C i1176C	i1470C i1870C i2176C	i1400 i1800	RNS0308 RNS0600 RNS1078C RFS0300 RFS0650 RFS1278C	RNS1000 RFS1200 RFS2378C RFS2300	RF2300	S3300 S3070C
Model Width			30"	30"	30"	30"	30"	48"	22"	30"	36.7"	48"
F-700	1	30"	K-303000 Single head Adapter (included with bin)					N/A	+K302200	K303000 included	N/A	N/A
F-1300	1	48"	K-483048 Single head Adapter (included with Bin)					N/A	K483048 included with bin			
F-1325, F-1650	1	60"	K-603048 Single head Adapter (included with Bin)					N/A	K603048 included with bin		+K-604800	
	2*	60"	K-603030 Side-by-Side 30" Head Adapter					N/A	+K-00421 & K-603030	+K603030	N/A	N/A
FC-1350	1	60"	K-613048 Single head Adapter (included with Bin)					N/A	K613048 included with bin		+K-614800	
	2*	60"	K-613030 Side-by-Side 30" Head Adapter					N/A	+K-00421 & K-613030	+K603030	N/A	N/A

\*For side by side application use with water-cooled, or ice machines with top air discharge option. Check machine clearance requirements. Shaded area indicates not a product application