



KM-151B_H

SELF-CONTAINED CUBER WITH BUILT-IN STORAGE BIN



KM-151B_H
02/01/17
Item # 13236

W x D x H
23^{3/4}" x 28^{1/4}" x 39" *
*including 6" legs

KM-151BAH ★

Air-Cooled
Shown

KM-151BWH

Water-Cooled




Item #: _____
Project: _____
Qty: _____
AIA#: _____

Features

► Individual crescent cube

► Stainless steel evaporator

► CycleSaver™ design 

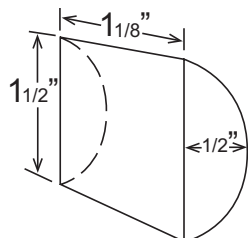
- Up to 146 lbs. of ice production per 24 hours
- Up to 78 lbs. of built-in storage capacity
- Durable stainless steel exterior
- Front in, front out airflow
- Slide in door
- EverCheck™ alert system 
- Removable air filter
- Power switch accessible without panel removal
- Built-in installation possible
- Drain pump assembly - HS-5061
- R-134a Refrigerant

Warranty:

3 Year Parts & Labor on entire machine. 5 Year Parts & Labor on Evaporator.
5 Year Parts on Compressor; air-cooled condenser coil.
1 Year - HS-5061 Drain Pump Assembly - Parts & Labor.
Valid in United States, Canada, Puerto Rico and U.S. Territories. Contact factory for warranty in other countries.

		ICE PRODUCTION				WATER USAGE		ELECTRICAL						
Condenser	Model	Air / Water Temp Lbs. per 24 hours		Per Cycle		Potable Gal. per 100 lbs.	Condenser Gal. per 100 lbs.	kWh Used per 100 lbs.	Max. Fuse Size or HACR Circuit Breaker	Amperage	Voltage	Heat Rejection BTU/hr.	Shipping Weight	ENERGY STAR®
		70°/ 50°F	90°/ 70°F	Lbs.	Cubes	90°/ 70°F	90°/ 70°F	90°/ 70°F						
Air-Cooled	KM-151BAH	146	121	2.75	130	17.8	N/A	8.4	15A	7.0A	115V/60/1	3,290	156 lbs.	★
Water-Cooled	KM-151BWH	146	130	2.75	130	25.0	140	7.3	15A	6.8A	115V/60/1	3,220	156 lbs.	

KM Cube Dimensions*



* approximate size in inches, image not to scale

Operating Limits

- Ambient Temp Range 45 - 100°F
- Water Temp Range 45 - 90°F
- Water Pressure 10 - 113 PSIG
- Voltage Range 104 - 127V

Service

- Allow enough space at rear for water supply and drain connections, at least 12" (30 cm) clearance at front and at least 0.6" (15 mm) clearance at top for maintenance.

Plumbing

- Icemaker Water Supply Line: Minimum 1/4" Nominal ID Copper Water Tubing or Equivalent
- Icemaker Drain Line: Minimum 3/4" Nominal ID Hard Pipe or Equivalent

Water-Cooled Model (Lines Must Be Independent of Icemaker)

- Condenser Water Supply Line: Minimum 1/4" Nominal ID Copper Water Tubing or Equivalent
- Condenser Drain/Return Line: Minimum 1/4" Nominal ID Hard Pipe (open drain system) or Copper Water Tubing (closed loop system) or Equivalent



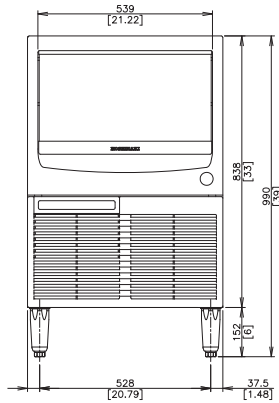
KM-151B_H

SELF-CONTAINED CUBER WITH BUILT-IN STORAGE BIN

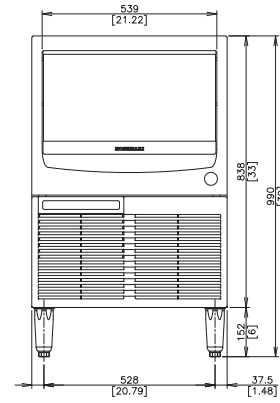


KM-151B_H
02/01/17
Item # 13236

FRONT VIEW



AIR-COOLED

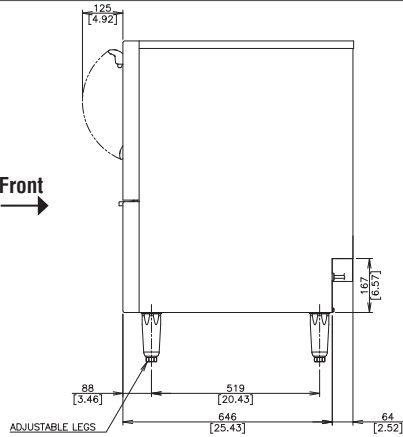


WATER-COOLED

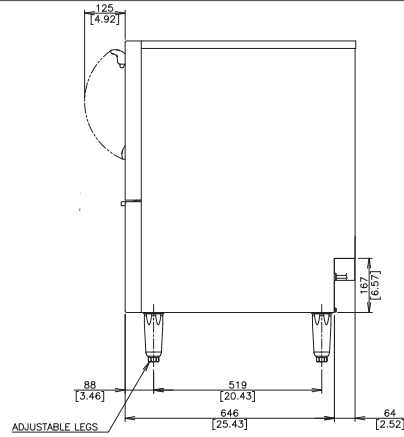
mm
[inch]

SIDE VIEW

Front
→

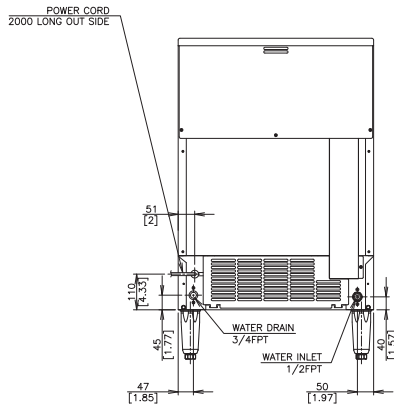


AIR-COOLED

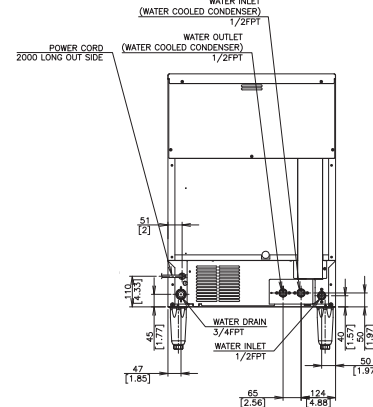


WATER-COOLED

REAR VIEW

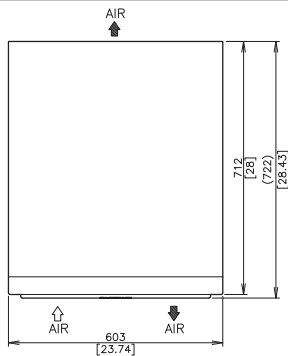


AIR-COOLED

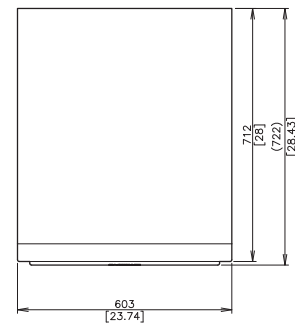


WATER-COOLED

TOP VIEW



AIR-COOLED



WATER-COOLED